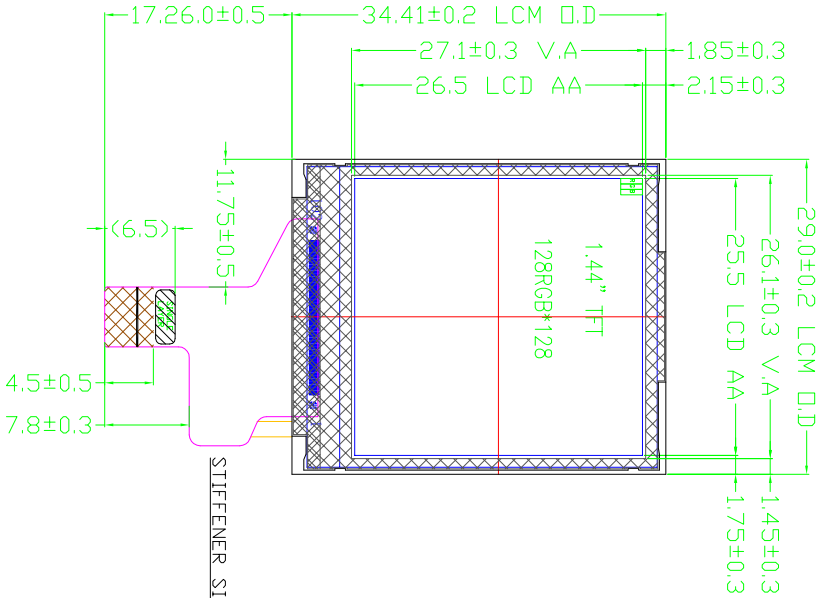


REV	DC/PC NUMBER	DESCRIPTION	DATE

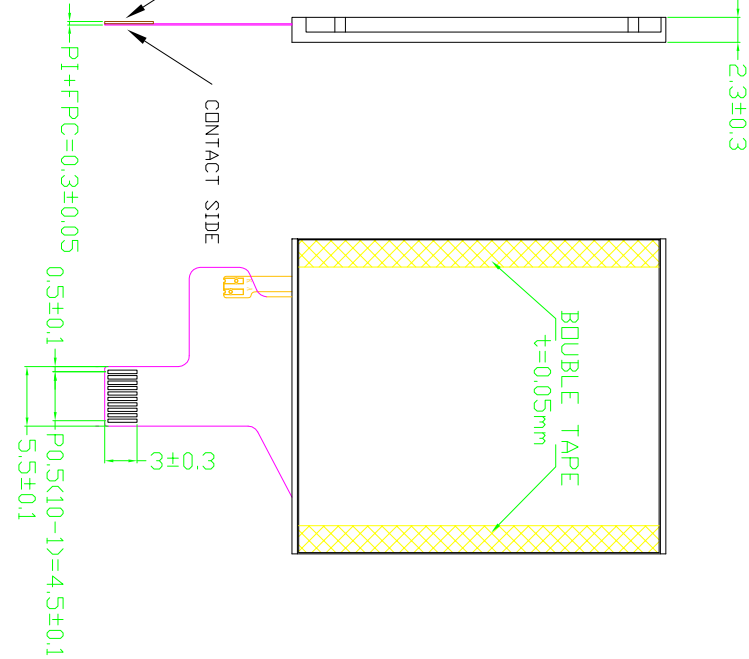
I/F

PIN	SYMBOL
1	LED-A
2	LED-K
3	SPI3/4W
4	VDD
5	GND
6	CS
7	RESET
8	SDA
9	SCL
10	D/CX

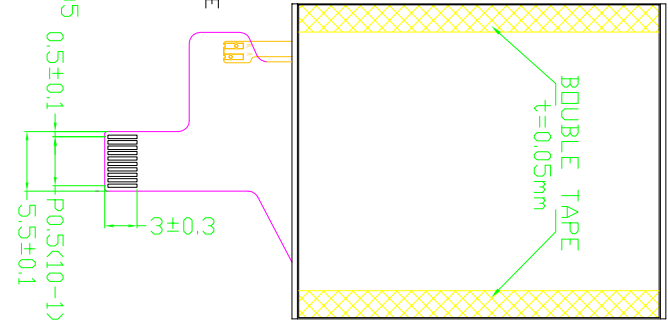
FRONT VIEW



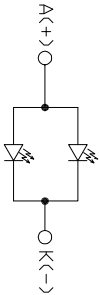
SIDE VIEW



BACK VIEW



LED CIRCUIT DIAGRAM:



NOTES:

- 1.DISPLAY MODE : TFT 1.44" 128RGB*128,TN,NORMALLY WHITE
- 2.DRIVE IC : ST7735S OR EQUIVALENT
- 3.OPTIMA VIEW DIRECTION:12 O'CLOCK
- 4.GOOD VIEW DIRECTION:6 O'CLOCK
- 5.BACKLIGHT:ILED=40mA,VLED=2.8V~3.4V
- 6.BRIGHTNESS:250typ.
- 7.OPERATING VOLTAGE:3.2V
- 8.OPERATING TEMPERATURE: -20°C TO 70°C
- 9.PRODUCTS CONFORM TO ROHD STANDARD.
- 10.GENERAL TOLERANCE : ± 0.2 mm.

CONTROL DIMENSION: ()

XINSUN DISPLAY INTEGRATION

APPROVED:	JOB	3rd ANGLE
CHECKED:	ERIC	UNIT
DISIGNED:	ISSCA	SCALE
		PAGE

MODEL NAME: XF014128128A-TSNL

DATE: 1/1