

REV	DC/EC NUMBER	DESCRIPTION	DATE

TOP VIEW

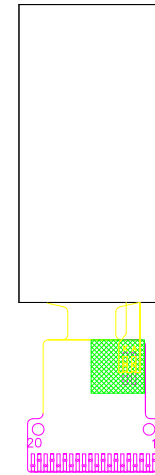
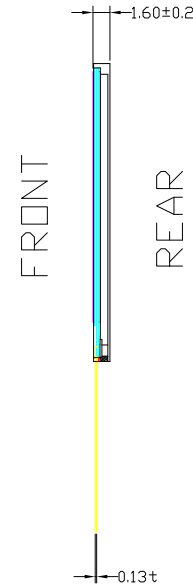
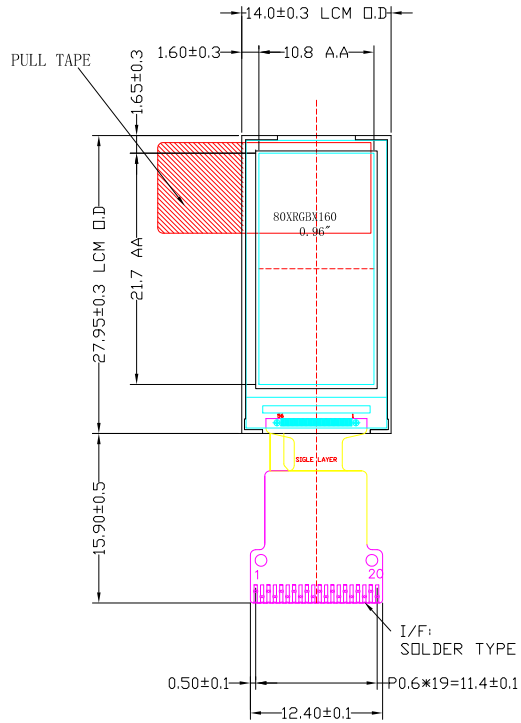
SIDE VIEW

BOTTOM VIEW

I/F

Pin Assignment	
NO	SYMBOL
1	TE
2	CS
3	RESET
4	RS
5	SCL
6	SDA
7	GND
8	IDVCC
9	LEDK
10	LEDA
11	NC
12	VCC
13	GND
14	GND
15	NC
16	NC
17	NC
18	NC
19	NC
20	NC

4-SPI



LED CIRCUIT DIAGRAM:



1 PCS WHITE LED; IF =20mA, VF=2.8V~3.3V

NOTES:

- 1.DISPLAY MODE : TFT 0.96" 80RGBx160,IPS,NORMALLY BLACK
- 2.DRIVE IC : ST7735S OR EQUIVALENT
- 3.VIEW DIRECTION:ALL O'CLOCK
- 4.BACKLIGHT:ILED=20mA,VLED=2.8V~3.3V
- 5.BRIGHTNESS:250typ.
- 6.OPERATING VOLTAGE:2.8V
- 7.OPERATING TEMPERATURE: -20°C TO 70°C
STORAGE TEMPERATURE: -30°C TO 80°C
- 8.PRODUCTS CONFORM TO ROHS STANDARD.
- 9.GENERAL TOLERANCE : ±0.2mm.

CONTROL DIMENTION:		XINSUN DISPLAY INTEGRATION	
REFERENCE DIMENTION:		()	
APPROVED:	JOB	MODEL NAME	3rd ANGLE
CHECKED:	ERIC	PART NAME	UNIT
DESIGNED:	ISSCA	XF0096QQV02A-ISLL	mm
		DRAWING NUMBER	SCALE
		MATERIAL NUMBER	PAGE
			1/1